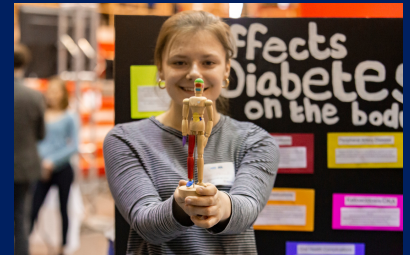
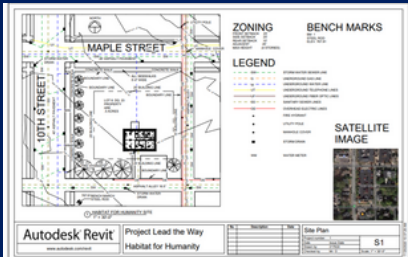


MASSACHUSETTS PLTW COMMUNITY CHALLENGE



Help BUILD the foundation for our community goal:
choosing the authentic skills students need to solve meaningful problems



We challenge each PLTW educator to collect as many Legos as possible



Tweet a pic to inform fall conference sessions by 10/6

1. Best student work sketch or flowchart
2. Classroom collaboration norms
3. Student work from last year's SIC or showcase
4. Equipment storage system/hack

Twitter: use #PLTWMA and tag both @MassLearning & @Mass_STEMHub
You can also submit via a form on mass-stemhub.org/PLTWCommunity.



Roster your students by October 1

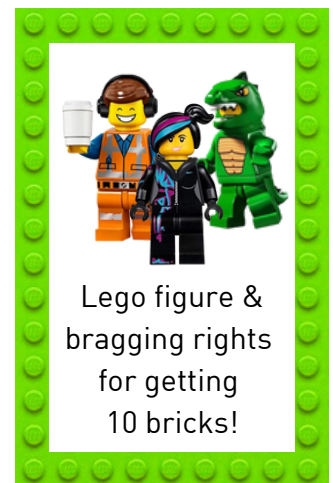
Complete your class rosters in myPLTW or Clever.
Ensure proper class names, complete student list,
and accurate start/end dates.



Complete back to school action items

- Register for conference
- Follow @MassLearning on Twitter
- Invite the Mass Learning Project team for a visit
- Email your community lead
- Nominate an educator for our statewide awards

Visit www.mass-stemhub.org/PLTWCommunity for links



Join us Oct 16 at Fall Conference to see what we BUILD as a community
(until then, follow us on twitter for sneak peaks!)

CHALLENGE FAQs

WHAT IS GOING TO HAPPEN AT CONFERENCE?

Our back to school community challenge will culminate at the October 16 conference at WPI. Teachers and leaders will receive their Lego bricks for their gallery walk submissions and community action items. As a community we will create something together.

WHAT IS WITH THE LEGOS? I'M GETTING LEGO BRICKS?

Yep! Teachers and leaders will receive lego bricks at the conference for each of their submissions in the back to school challenge. Our MA PLTW community is full of amazing educators with creative ideas and strong instructional practices. Our back to school challenge seeks to provide a fun way to capture some of the innovation happening in schools and share it across the state.

HOW DO I PARTICIPATE/SUBMIT MY ITEMS?

There are three ways to participate in the challenge and contribute to the community. First, tweet a picture of your best student sketch, collaboration norms, classroom organizational system, or student project from last year. Use #PLTWMA and tag both @MassLearning and @Mass_STEMHub. These tweets will be compiled and help inform sessions at conference. If you do not want to tweet you can also submit using our online form at www.mass-stemhub.org/PLTWCommunity. Second, make sure your classes are rostered by October 1. And third, complete your back to school action items. For the last two, no need to tweet -- we will have the info on these and automatically tally up your Lego bricks!

CAN LEADERS PARTICIPATE?

Leaders can absolutely participate. Any PLTW teacher or leader in Massachusetts is welcome!

WHY ARE THE PICTURES WE TWEET IMPORTANT?

The pictures that educators tweet are going to be used in two important ways at the conference. First, we will have the pictures printed and they will be displayed for other members of the community to see. We often get to visit classrooms and see educators' great work and planning, this will be a way to allow other educators to get ideas from others. Second, we will be running a breakout session on each of these topics at the conference and the facilitation of those sessions will use the submissions to help inform their presentation.

WHO IS MASS LEARNING PROJECT?

Mass Learning Project is a newly launched organization dedicated to providing support for schools and educators to increase access to high-quality applied learning experiences for K-12 students in Massachusetts. The team's first project will be providing additional on-the-ground support to PLTW schools. Today, our PLTW community stands over 330 schools strong and we are seeing examples of incredible ways in which you are using this program to best serve your students. To fully leverage the efforts of the MA PLTW educator community, we need a bigger state team. It has always been our ambition to have PLTW teachers and leaders feel fully supported in their work and at the cutting edge of what the program can deliver. Mass Learning Project, in ongoing partnership with the One8 Foundation, will allow us to continue to pursue this vision by providing many of the same opportunities that have existed in the past but also a platform and team with the capacity to expand this work over time. You can learn more at <http://masslearning.org>.

I WANT TO DO THEM ALL - WHERE CAN I GET EASY LINKS?

Visit www.mass-stemhub.org/PLTWCommunity for a digital version of this flyer and additional info.

#PLTWMA | @MassLearning | @Mass_STEMHub

